

Kentucky

State High School Basketball Tournament

LOUISVILLE KENTUCKY

74th Boys' Sweet Sixteen

Official Statistics
Game Five
Greenup County vs. Belfry

RUPP ARENA • LEXINGTON, KENTUCKY • MARCH 13-16, 1991 • \$2.00



VISITORS (Last Name, First)

NO.	BELFRY	Tot FG		3-POINT		FT	FTA	Rebounds			PF	TP	A	TO	BLK	S	TIME
		FG	FGA	FG	FGA			OFF	DEF	TOT							
32	Kinser, Tim	4	8	0	0	0	0	2	3	5	5	8	0	2	0	1	32:14
40	Williamson, Mark	4	7	0	0	1	1	1	7	8	5	9	0	3	0	2	28:07
54	Dotson, Jim	1	2	0	0	0	0	0	2	2	3	2	0	1	0	0	8:17
10	Hager, Shawn	5	8	1	3	0	0	1	1	2	0	11	2	4	0	4	35:00
12	Hylton, J.J.	4	18	0	2	2	2	0	1	1	5	10	1	4	0	1	29:10
22	Phillips, Chris	2	4	0	0	0	0	0	3	3	4	4	1	2	0	2	30:40
25	Muha, Brett	0	0	0	0	0	0	1	1	2	0	0	2	0	0	0	10:06
14	Pinson, Joey	0	0	0	0	0	0	0	0	0	0	0	0	0	0	0	0:39
20	Varney, Matt	0	1	0	1	0	0	0	0	0	0	0	0	0	0	0	0:47
TEAM REBOUNDS (INCLUDED IN TOTALS)								1	1	2							
TOTALS		20	48	1	6	3	3	6	19	25	22	44	6	16	0	10	175

TOTAL FG 1st HALF 4/12 33.3% 2nd HALF 16/36 44.4% GAME 20/ 48 41.7% DEADBALL
 3-POINT FG 1st HALF 0/ 1 0.0% 2nd HALF 1/ 5 20.0% GAME 1/ 6 16.7% REBOUNDS 0
 FREE THROWS 1st HALF 0/ 0 0.0% 2nd HALF 3/ 3 100.0% GAME 3/ 3 100.0%

HOME (Last Name, First)

NO.	GREENUP COUNTY	Tot FG		3-POINT		FT	FTA	Rebounds			PF	TP	A	TO	BLK	S	TIME
		FG	FGA	FG	FGA			OFF	DEF	TOT							
20	Ailster, Patrick	0	1	0	0	0	0	0	2	2	3	0	1	3	0	0	21:55
22	Gammon, Jason	4	5	0	0	8	10	1	1	2	4	16	2	6	0	0	33:00
44	Claxon, Tracy	6	13	0	0	3	8	2	12	14	1	15	1	8	0	1	35:00
12	Plummer, Chris	2	10	1	3	3	4	0	2	2	1	8	4	3	0	5	35:00
15	Blevins, Jason	4	5	1	1	5	5	1	1	2	0	14	1	1	0	2	34:33
33	Cochran, Adam	0	1	0	0	0	0	0	2	2	3	0	0	1	0	0	13:05
10	Stultz, Brad	0	0	0	0	0	0	0	0	0	0	0	0	0	0	0	2:27
TEAM REBOUNDS (INCLUDED IN TOTALS)								1	1	2							
TOTALS		16	35	2	4	19	27	5	21	26	12	53	9	22	0	8	175

TOTAL FG 1st HALF 2/ 9 22.2% 2nd HALF 14/26 53.8% GAME 16/ 35 45.7% DEADBALL
 3-POINT FG 1st HALF 0/ 1 0.0% 2nd HALF 2/ 3 66.7% GAME 2/ 4 50.0% REBOUNDS 4
 FREE THROWS 1st HALF 4/ 6 66.7% 2nd HALF 15/21 71.4% GAME 19/ 27 70.4%

OFFICIALS: Danny Percell, Howard Finney, R. Curry-Alt.

Technical: BELFRY Bench - 1;

SCORE BY PERIODS

BELFRY	8	11	10	9	6	= 44
GREENUP COUNTY	8	13	10	7	15	= 53

Attendance: 14,690

COMMENTS: POINTS OFF TURNOVERS

BELFRY 18 GREENUP COUNTY 15 BELFRY

SECOND CHANCE POINTS

8 GREENUP COUNTY 5

Player	Team	GREENUP COUNTY
Ailster,Patrick,Gannon, Jason,Claxon, Tracy,Plummer, Chris ,Blevins, Jason Ball to Muskateers		
1-1 1	1-1 1	100% 8 ft Right Side Jump shot by Claxon, Tracy Assist by Plummer, Chris
0- 2	0- 2	00.0% 00.0% Claxon, Tracy 2 Free Throws - missed both
2- 4 1	2- 4 1	50.0% 50.0% Claxon, Tracy 2 Free Throws - made both Foul on Ailster,Patrick
2- 2	4- 6	100% 66.6% Blevins, Jason 2 Free Throws - made both
1	2	Foul on Plummer, Chris Sub In: Cochran, Adam Out: Ailster,Patrick
2-3	2-7	66.6% 28.5% 6 ft Lane Bank by Claxon, Tracy

Time	Score	BELFRY
1 7:47	*2-0	Kinser, Tim,Williamson,Mark,Dotson, Jim,Hager, Shawn,Hylton, J.J.
1 7:09		Foul on Dotson, Jim
1 7:09		
1 7:03	2-2*	Driving Layup by Dotson, Jim Assist by Hager, Shawn
1 5:41		Foul on Dotson, Jim
1 5:38		Sub In: Phillips, Chris Out: Dotson, Jim
1 5:32	*4-2	
1 5:04		Foul on Williamson,Mark
1 4:25		Foul on Williamson,Mark
1 4:25	*6-2	
1 4:13	6-4*	17 ft Right Angle Jump shot by Phillips, Chris Assist by Hager, Shawn
1 3:38	6-6*	Driving Layup by Hager, Shawn
1 2:45		
1 2:45		
1 1:20	*8-6	
1 0:14	8-8*	Fast Break Layup by Hylton, J.J.

Player	Team
1	1
1-1	100% 1-3 33.3%
1	1
2	2
1	3
2	4
1-1	100% 2-8 25.0%
2	2
1-2	50.0% 3-9 33.3%
1-4	25.0% 4-12 33.3%

Player	Team	GREENUP COUNTY	Time	Score	BELFRY	Player	Team
Cochran, Adam, Gammon, Jason, Claxon, Tracy, Plummer, Chris, Blevins, Jason			Ball to Muskateers			Hager, Shawn, Kinser, Tim, Williamson, Mark, Phillips, Chris, Hylton, J.J.	
1-2	50.0%	3-10 30.0%	3 pt	20 ft Left Angle Jump shot by Blevins, Jason	2 7:05	8-10*	Fast Break Dunk by Hylton, J.J.
1		2		Assist by Gammon, Jason	2 6:44	*11-10	
1-1	100%	4-11 36.3%	15 ft	Lane Jump shot by Gammon, Jason	2 6:14	*13-10	
2		3		Assist by Plummer, Chris			
2-2	100%	5-12 41.6%	4 ft	Lane Driving by Gammon, Jason	2 6:01	13-12*	Follow Layup by Kinser, Tim
					2 5:34	*15-12	
					2 5:27	15-14*	Driving Layup by Hylton, J.J.
					2 5:16		
REB: 9 A: 3 BLK: 0 TO: 5 PF: 2			No. 1 GREENUP COUNTY			REB: 9 A: 2 BLK: 0 TO: 3 PF: 4	
S: 1 FT: 4-6 66.6% FG: 5-12 41.6%			T I M E - O U T			S: 4 FT: 0-0 00.0% FG: 7-18 38.8%	
Subs In: Stultz, Brad, Ailster, Patrick			2 5:16				
Out: Gammon, Jason, Cochran, Adam							
3-5	60.0%	6-14 42.8%	Follow	Follow by Claxon, Tracy	2 5:15		Sub In: Muha, Brett Out: Williamson, Mark
2-3	66.6%	7-16 43.7%	Follow	Layup by Blevins, Jason	2 5:06	*17-14	
					2 4:00	*19-14	
					2 3:36	19-16*	6 ft Lane Bank by Kinser, Tim
							Assist by Hylton, J.J.
					2 3:16		Sub In: Williamson, Mark Out: Muha, Brett
					2 3:16		Sub In: Dotson, Jim Out: Phillips, Chris
					2 3:16		
1		3		Foul on Gammon, Jason	2 2:52		
					2 2:50	19-18*	6 ft Lane Jump shot by Williamson, Mark
2		4		Foul on Ailster, Patrick	2 2:49		
				Sub In: Cochran, Adam Out: Ailster, Patrick	2 2:49		
				Sub In: Blevins, Jason Out: Stultz, Brad	2 2:49		
					2 2:49		
					2 2:49	19-19*	Williamson, Mark 1 Free Throw - made
					2 1:56		Foul on Williamson, Mark
					2 1:56		Sub In: Phillips, Chris Out: Williamson, Mark
3-3	100%	8-17 47.0%	18 ft	Left Side Jump shot by Gammon, Jason	2 1:56	*21-19	
1		4		Assist by Claxon, Tracy			
1		5		Foul on Cochran, Adam	2 0:54		
					2 0:39		Foul on Hylton, J.J.
					2 0:38		Sub In: Pinson, Joey Out: Dotson, Jim

VISITORS (Last Name, First)

NO.	BELFRY	Tot FG		3-POINT		FT	FTA	Rebounds			PF	TP	A	TO	BLK	S	TIME
		FG	FGA	FG	FGA			OFF	DEF	TOT							
32	Kinser, Tim	2	3	0	0	0	0	1	2	3	0	4	0	0	0	0	16:00
40	Williamson, Mark	1	3	0	0	1	1	0	5	5	3	3	0	1	0	1	12:05
54	Dotson, Jim	1	2	0	0	0	0	0	0	0	2	2	0	0	0	0	5:00
10	Hager, Shawn	1	2	0	1	0	0	0	0	0	0	2	2	1	0	1	16:00
12	Hylton, J.J.	3	11	0	1	0	0	0	1	1	1	6	1	1	0	1	16:00
22	Phillips, Chris	1	2	0	0	0	0	0	1	1	0	2	0	1	0	1	12:18
25	Muha, Brett	0	0	0	0	0	0	0	0	0	0	0	0	0	0	0	1:59
14	Pinson, Joey	0	0	0	0	0	0	0	0	0	0	0	0	0	0	0	0:38
TEAM REBOUNDS (INCLUDED IN TOTALS)																	
TOTALS		9	23	0	2	1	1	1	9	10	6	19	3	4	0	4	80

TOTAL FG 1st HALF 4/12 33.3% 2nd HALF 5/11 45.5% GAME 9/ 23 39.1% DEADBALL
 3-POINT FG 1st HALF 0/ 1 0.0% 2nd HALF 0/ 1 0.0% GAME 0/ 2 0.0% REBOUNDS 0
 FREE THROWS 1st HALF 0/ 0 0.0% 2nd HALF 1/ 1 100.0% GAME 1/ 1 100.0%

HOME (Last Name, First)

NO.	GREENUP COUNTY	Tot FG		3-POINT		FT	FTA	Rebounds			PF	TP	A	TO	BLK	S	TIME
		FG	FGA	FG	FGA			OFF	DEF	TOT							
20	Ailster, Patrick	0	1	0	0	0	0	0	1	1	2	0	0	1	0	0	7:42
22	Gammon, Jason	3	3	0	0	0	0	0	0	0	1	6	1	3	0	0	14:00
44	Claxon, Tracy	3	7	0	0	2	4	1	7	8	0	8	1	3	0	1	16:00
12	Plummer, Chris	0	4	0	1	0	0	0	1	1	1	0	2	0	0	0	16:00
15	Blevins, Jason	2	3	1	1	2	2	1	1	2	0	7	0	0	0	0	15:33
33	Cochran, Adam	0	0	0	0	0	0	0	2	2	1	0	0	0	0	0	8:18
10	Stultz, Brad	0	0	0	0	0	0	0	0	0	0	0	0	0	0	0	2:27
TEAM REBOUNDS (INCLUDED IN TOTALS)																	
TOTALS		8	18	1	2	4	6	2	12	14	5	21	4	7	0	1	80

TOTAL FG 1st HALF 2/ 9 22.2% 2nd HALF 6/ 9 66.7% GAME 8/ 18 44.4% DEADBALL
 3-POINT FG 1st HALF 0/ 1 0.0% 2nd HALF 1/ 1 100.0% GAME 1/ 2 50.0% REBOUNDS 2
 FREE THROWS 1st HALF 4/ 6 66.7% 2nd HALF 0/ 0 0.0% GAME 4/ 6 66.7%

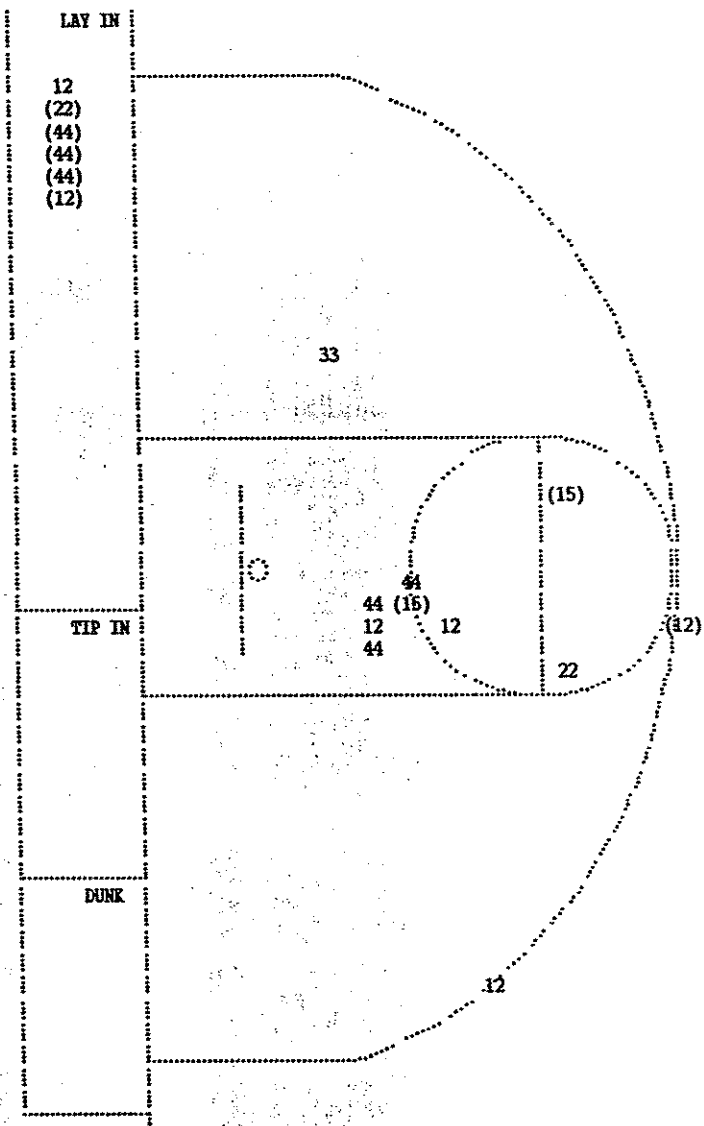
OFFICIALS: Danny Percell, Howard Finney, R. Curry-Alt.
 Technicals: None

SCORE BY PERIODS

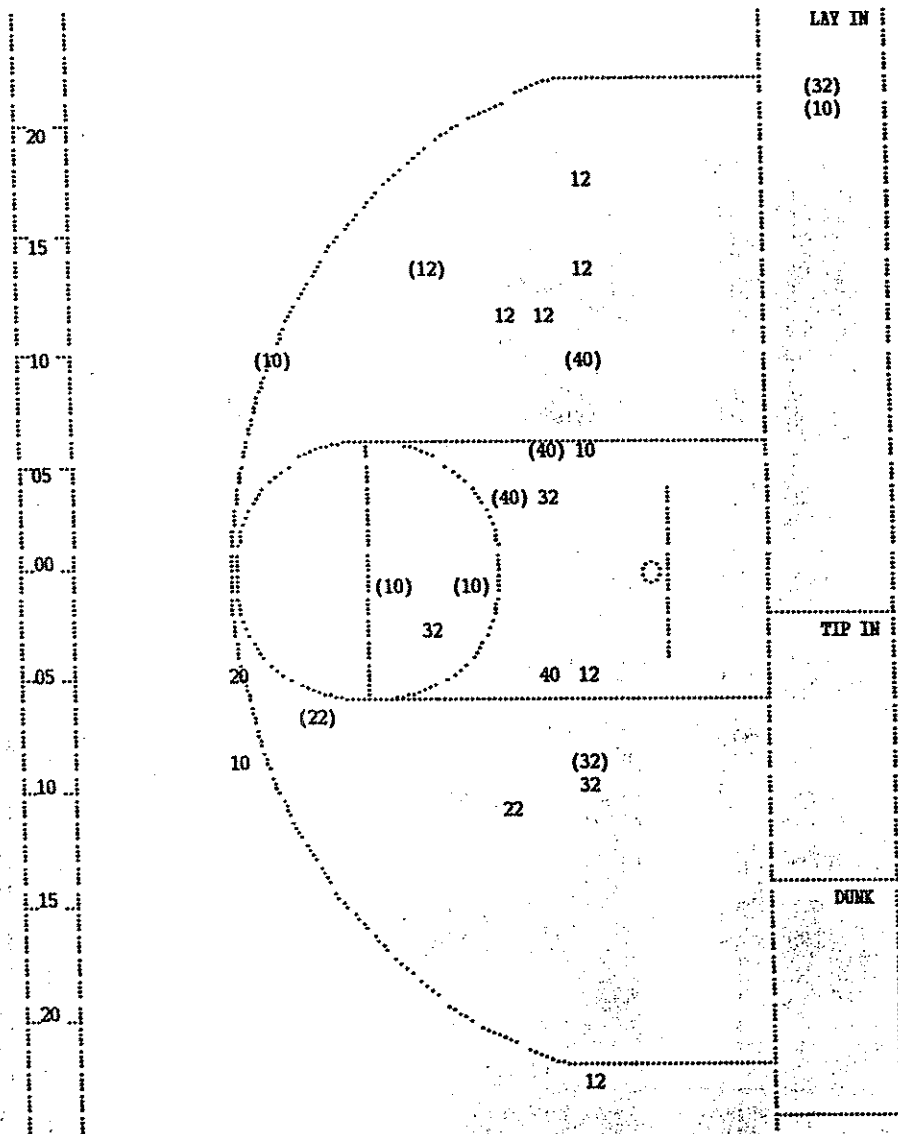
BELFRY 8 11 = 19
 GREENUP COUNTY 8 13 = 21

Attendance:

COMMENTS:	POINTS OFF TURNOVERS	SECOND CHANCE POINTS
BELFRY	5 GREENUP COUNTY	2 GREENUP COUNTY
	6 BELFRY	4



GREENUP COUNTY					
Player		Player		Player	
22 - Gammon, Ja	1 / 2	50.0%			
44 - Claxton, Tr	3 / 6	50.0%			
12 - Plummer, C	2 / 6	33.3%			
15 - Blevins, J	2 / 2	100.0%			
33 - Cochran, A	0 / 1	0.0%			
Layups	1-9 Ft	10-15 Ft	Over 15 Ft	3 Pointers	Total
5 / 6	1 / 6	1 / 3	1 / 2	8 / 17	
83.3%	16.7%	33.3%	50.0%	47.1%	



BELFRY					
Player		Player		Player	
32 - Kinser, Ti	2 / 5	40.0%	22 - Phillips,	1 / 2	50.0%
40 - Williamson	3 / 4	75.0%			
10 - Hager, Sha	4 / 6	66.6%			
12 - Hylton, J.	1 / 7	14.2%			
20 - Varney, Ma	0 / 1	0.0%			
Layups	1-9 Ft	10-15 Ft	Over 15 Ft	3 Pointers	Total
2 / 2	4 / 9	2 / 7	2 / 3	1 / 4	11 / 25
100.0%	44.4%	28.6%	66.7%	25.0%	44.0%

Player	Team	GREENUP COUNTY
Ailster, Patrick, Gammon, Jason, Claxon, Tracy, Plummer, Chris, Blevins, Jason Ball to Muskateers		
1-2	50.0%	5-8 62.5% Gammon, Jason 2 Free Throws - made 1st missed 2nd
3-4	75.0%	9-20 45.0% 15 ft Lane Jump shot by Blevins, Jason Assist by Plummer, Chris
3		5 Foul on Claxon, Tracy
1		1 Foul on Gammon, Jason
2		2 Foul on Gammon, Jason
3		3 Foul on Ailster, Patrick
4-5	80.0%	10-23 43.4% Driving Flip by Gammon, Jason Assist by Blevins, Jason
1		6 Sub In: Cochran, Adam Out: Ailster, Patrick
1-7	14.2%	11-25 44.0% 3 pt 20 ft Circle Jump shot by Plummer, Chris Foul on Cochran, Adam
2		4
4-9	44.4%	12-28 42.8% Layup Alley Oop by Claxon, Tracy Assist by Plummer, Chris
4		7

Time	Score	BELFRY	Player	Team
Hager, Shawn, Hylton, J.J., Kinser, Tim, Dotson, Jim, Muha, Brett				
3	7:48	21-21*	8 ft Right Side Jump shot by Kinser, Tim Assist by Muha, Brett	3-4 75.0% 10-24 41.6%
3	7:22		Foul on Dotson, Jim	1 4
3	7:22		Sub In: Phillips, Chris Out: Dotson, Jim	3 1
3	7:22	*22-21		
3	7:15	22-23*	8 ft Lane Driving by Hager, Shawn	2-3 66.6% 11-25 44.0%
3	7:11	*24-23		
3	6:39			
3	6:12		Foul on Hylton, J.J.	2 2
3	5:43			
3	5:03		Sub In: Williamson, Mark Out: Hylton, J.J.	
3	5:03	24-25*	7 ft Left Side Bank by Williamson, Mark	2-4 50.0% 12-29 41.3%
3	4:41		Foul on Kinser, Tim	1 3
3	4:36			
3	4:36			
3	4:17	*26-25		
3	3:49		Foul on Kinser, Tim	2 4
3	3:32	26-27*	17 ft Circle Jump shot by Phillips, Chris Assist by Muha, Brett	2-3 66.6% 13-31 41.9%
3	2:58	26-29*	12 ft Lane Bank by Hager, Shawn	2 5
3	2:42	*29-29		3-4 75.0% 14-32 43.7%
3	2:15			
3	1:38		Foul on Kinser, Tim	3 5
3	0:27	*31-29		

Player	Team	GREENUP COUNTY	Time	Score	BELFRY	Player	Team
Plummer, Chris	Blevins, Jason	Cochran, Adam, Claxon, Tracy, Gammon, Jason			Hylton, J.J., Kinser, Tim, Williamson, Mark, Phillips, Chris, Hager, Shawn		
3	5	Foul on Cochran, Adam Sub In: Ailster, Patrick Out: Cochran, Adam	4 7:49		Ball to Pirates		
			4 7:49				
			4 6:54		Foul on Hylton, J.J.	3	6
			4 6:20	31-31*	17 ft Left Side Jump shot by Hylton, J.J. Assist by Phillips, Chris	4-14 28.5%	15-37 40.5%
						1	6
5-12 41.6%	13-31 41.9%	Layup Alley Oop by Claxon, Tracy Assist by Gammon, Jason	4 5:57	*33-31			
2	8		4 5:26		Foul on Williamson, Mark	4	7
			4 5:26		Technical foul on BELFRY BENCH		
2- 4 50.0%	6-10 60.0%	Gammon, Jason 2 Free Throws - missed 1st made 2nd	4 5:26	*34-31			
			4 4:14	34-33*	Follow Layup by Kinser, Tim	4-8 50.0%	16-40 40.0%
			4 4:12		Foul on Hylton, J.J.	4	8
4- 6 66.6%	8-12 66.6%	Gammon, Jason 2 Free Throws - made both	4 4:12	*36-33			
			4 3:54	36-35*	7 ft Lane Bank by Williamson, Mark	3-6 50.0%	17-41 41.4%
			4 3:32		Foul on Kinser, Tim	4	9
2- 6 33.3%	8-14 57.1%	Claxon, Tracy 2 Free Throws - missed both	4 3:32				
			4 3:29				
		REB: 23 A: 8 BLK: 0 TO: 18 PF: 5 S: 5 FT: 8-14 57.1% FG: 13-31 41.9%			No. 1 GREENUP COUNTY T I M E - O U T	REB: 21 A: 6 BLK: 0 TO: 12 PF: 9 S: 7 FT: 1-1 100% FG: 17-41 41.4%	
6-13 46.1%	14-32 43.7%	Layup Alley Oop by Claxon, Tracy, made Assist by Ailster, Patrick	4 2:54	36-38*	3 pt 21 ft Left Angle Bank by Hager, Shawn, made	4-6 66.6%	18-42 42.8%
1	9		4 2:27	*38-38			
1-9 11.1%	14-33 42.4%	3 pt 21 ft Left Side Jump shot by Plummer, Chris, missed	4 2:10		Out-of-Bounds by Hager, Shawn	3	13
			4 1:46				
			4 1:41		Rebound by Phillips, Chris	D-1 Tot-1	D-1 Tot-22
			4 1:35				
		REB: 23 A: 9 BLK: 0 TO: 19 PF: 5 S: 5 FT: 8-14 57.1% FG: 14-33 42.4%			T I M E - O U T BELFRY No. 1	REB: 22 A: 6 BLK: 0 TO: 13 PF: 9 S: 8 FT: 1-1 100% FG: 18-42 42.8%	
1	6	Steal by Plummer, Chris	4 1:26				
			4 1:24		Bad Pass by Hager, Shawn	4	14
			4 1:09		Steal by Hager, Shawn	1	9
2	20	Out-of-Bounds by Plummer, Chris	4 1:09				
			4 0:16				
		REB: 23 A: 9 BLK: 0 TO: 20 PF: 5 S: 6 FT: 8-14 57.1% FG: 14-33 42.4%			T I M E - O U T BELFRY No. 2	REB: 22 A: 6 BLK: 0 TO: 14 PF: 9 S: 9 FT: 1-1 100% FG: 18-42 42.8%	
3	6	Foul on Gammon, Jason	4 0:06				
			4 0:06				
		REB: 23 A: 9 BLK: 0 TO: 20 PF: 6 S: 6 FT: 8-14 57.1% FG: 14-33 42.4%			T I M E - O U T BELFRY No. 3	REB: 22 A: 6 BLK: 0 TO: 14 PF: 9 S: 9 FT: 1-1 100% FG: 18-42 42.8%	
			4 0:01		3 pt 22 ft Right Side Jump shot by Hylton, J.J., missed	4-17 23.5%	18-43 41.8%
D-1 Tot-1	D-1 Tot-24	Rebound by Claxon, Tracy	4 0:00				

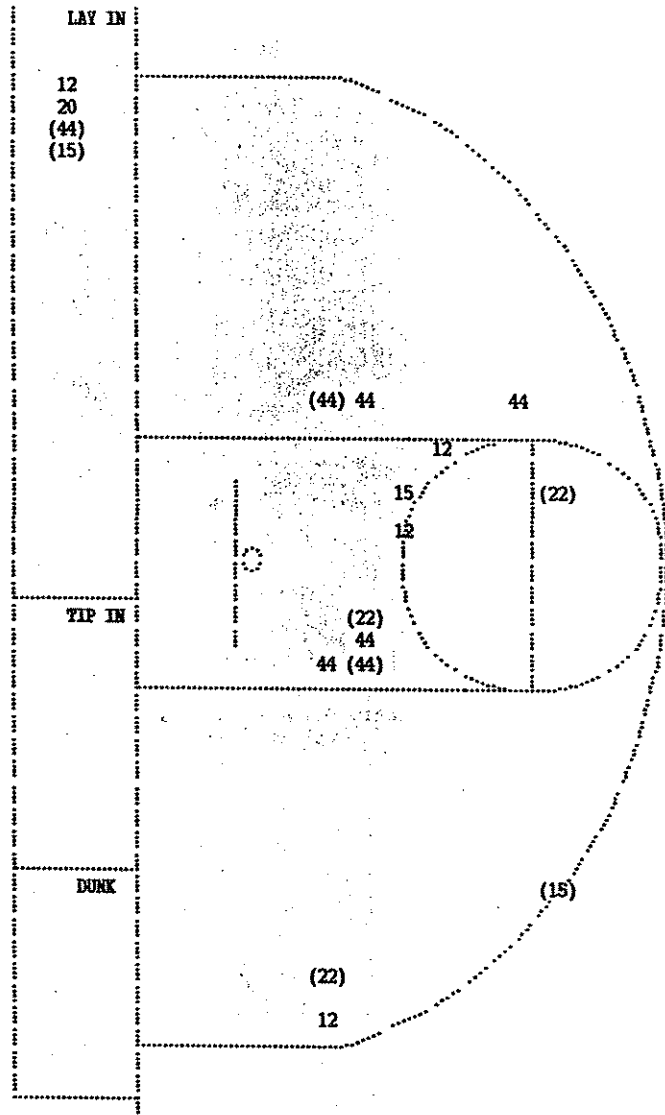
BELFRY "Pirates" vs GREENUP COUNTY "Muskateers"
 Overtime Play by Play

Tip off at 1:00 p.m. on 03/14/91 at Lexington, Ky.

Produced by the University of Kentucky Stat Crew with FINAL III - a Product of LEX

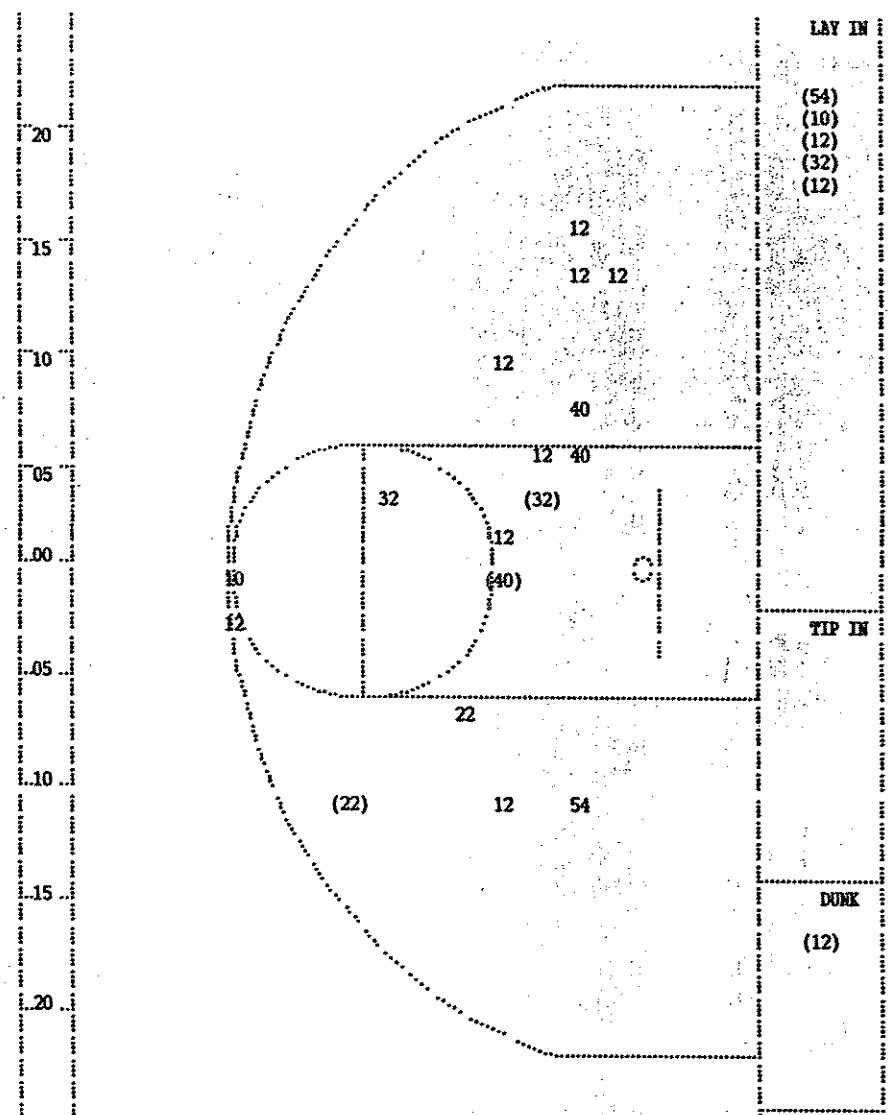
Player	Team	GREENUP COUNTY	Time	Score	BELFRY	Player	Team
80.0%	15-34	44.1%	6 ft Lane Jump shot by Blevins, Jason , made	5 2:47	*40-38		
				5 2:47	Foul on Kinser, Tim	5	10
3- 3	100%	9-15	60.0%	Blevins, Jason 1 Free Throw - made	5 2:46	Sub In: Dotson, Jim Out: Kinser, Tim	
					5 2:46	*41-38	
D-1	Tot-1	D-2	Tot-25	Rebound by Plummer, Chris	5 2:31	13 ft Left Side Jump shot by Hylton, J.J., missed	4-18 22.2% 18-44 40.9%
	3		21	Traveling Violation on Plummer, Chris	5 2:28		
					5 1:48		
					5 1:37	41-40* 10 ft Left Side Jump shot by Williamson, Mark, made	4-7 57.1% 19-45 42.2%

Player	Team	GREENUP COUNTY	Time	Score	BELFRY	Player	Team
6- 8 75.0%	11-17 64.7%	Gannon, Jason 2 Free Throws - made both	5 1:19		Foul on Phillips, Chris	1	11
1	7	Steal by Blevins, Jason	5 1:19	*43-40			
			5 1:05				
			5 1:02		Dribbling Error on Williamson,Mark	3	15
2- 2 100%	13-19 68.4%	Plummer, Chris 2 Free Throws - made both	5 1:02		Foul on Phillips, Chris	2	12
4	7	Foul on Gannon, Jason	5 1:02	*45-40			
			5 0:50				
			5 0:50	45-42*	Hylton, J.J. 2 Free Throws - made both	2- 2 100%	3- 3 100%
			5 0:47		Foul on Hylton, J.J.	5	13
			5 0:47		Sub In: Varney, Matt Out: Hylton, J.J.		
		REB: 25 A: 9 BLK: 0 TO: 21 PF: 7	5 0:47		REB: 22 A: 6 BLK: 0 TO: 15 PF: 13		
		S: 7 FT: 13-19 68.4% FG: 15-34 44.1%	T I M E - O U T	BELFRY No. 4	S: 9 FT: 3-3 100% FG: 19-45 42.2%		
8-10 80.0%	15-21 71.4%	Gannon, Jason 2 Free Throws - made both	5 0:47	*47-42			
			5 0:38		3 pt 20 ft Circle Jump shot by Varney, Matt, missed	0-1 00.0%	19-46 41.3%
D-1 Tot-1	D-3 Tot-26	Rebound by TEAM	5 0:37			3	14
3- 7 42.8%	16-22 72.7%	Claxon, Tracy 1 Free Throw - made	5 0:36		Foul on Phillips, Chris		
3- 8 37.5%	16-23 69.5%	Claxon, Tracy 1 Free Throw - missed	5 0:36	*48-42			
			5 0:35				
			5 0:34		Rebound by Dotson, Jim	D-1 Tot-1	D-2 Tot-23
			5 0:28		3 pt 22 ft Right Angle Jump shot by Hager, Shawn, missed	4-7 57.1%	19-47 40.4%
			5 0:25		Rebound by Hager, Shawn	0-1 Tot-1	0-1 Tot-24
			5 0:25	48-44*	Follow Layup by Hager, Shawn, made	5-8 62.5%	20-48 41.6%
		REB: 26 A: 9 BLK: 0 TO: 21 PF: 7	5 0:25		REB: 24 A: 6 BLK: 0 TO: 15 PF: 14		
		S: 7 FT: 16-23 69.5% FG: 15-34 44.1%	T I M E - O U T	BELFRY No. 5	S: 9 FT: 3-3 100% FG: 20-48 41.6%		
3- 4 75.0%	17-25 68.0%	Plummer, Chris 2 Free Throws - made 1st missed 2nd	5 0:25		Sub In: Muha, Brett Out: Dotson, Jim	4	15
2	8	Steal by Plummer, Chris	5 0:18		Foul on Phillips, Chris		
			5 0:18	*49-44			
			5 0:18		Sub In: Dotson, Jim Out: Muha, Brett	D-2 Tot-2	D-3 Tot-25
			5 0:18		Rebound by Dotson, Jim		
			5 0:16				
2-10 20.0%	16-35 45.7%	Driving Layup by Plummer, Chris , made	5 0:16		Bad Pass by Dotson, Jim	1	16
			5 0:16	*51-44			
			5 0:01		Foul on Williamson,Mark	5	16
5- 5 100%	19-27 70.3%	Blevins, Jason Intentional - made both	5 0:01		Sub In: Pinson, Joey Out: Williamson,Mark		
6	22	Bad Pass by Gannon, Jason	5 0:01	*53-44			
			5 0:01		Steal by Hager, Shawn	2	10
			5 0:01				



GREENUP COUNTY

Player	Player	Player			
20 - Allster, Pa	0 / 1	0.0%			
22 - Gammon, Ja	3 / 3	100.0%			
44 - Claxon, Tr	3 / 7	42.8%			
12 - Plummer, C	0 / 4	0.0%			
15 - Blevins, J	2 / 3	66.6%			
Layups	1-9 Ft	10-15 Ft	Over 15 Ft	3 Pointers	Total
2 / 4	3 / 8	1 / 3	1 / 1	1 / 2	8 / 18
50.0%	37.5%	33.3%	100.0%	50.0%	44.4%



BELFRY

Player	Player	Player			
32 - Kinser, Ti	2 / 3	66.6%			
40 - Williamson	1 / 3	33.3%			
54 - Dotson, Ji	1 / 2	50.0%			
10 - Hager, Sha	1 / 2	50.0%			
12 - Hylton, J.	3 / 11	27.2%			
22 - Phillips,	1 / 2	50.0%			
Layups	1-9 Ft	10-15 Ft	Over 15 Ft	3 Pointers	Total
6 / 6	2 / 6	0 / 7	1 / 2	0 / 2	9 / 23
100.0%	33.3%	0.0%	50.0%	0.0%	39.1%